



SAILING INSTRUCTIONS

1 ORGANISING AUTHORITY

- 1.1 Real Club Náutico de Valencia and Saint Petersburg Yacht Club with the approval of the Real Federación Española de Vela (RFEV) and in association with Federación de Vela de la Comunidad Valenciana and the National Optimist Class Association. The Orange Valencia, Optimist International Regatta will be held from March 7th to 11th, 2019. The venue will be in the Real Club Náutico de Valencia.

2 RULES

- 2.1 The regatta will be governed by:
- The “rules” as defined in the World Sailing Racing Rules of Sailing 2017-2020 (RRS).
 - No National Authority Prescriptions will apply.
 - [DP] International Optimist Class rules.
 - Appendix P will apply.

In addition, if there is a conflict between the English and Spanish text, English will prevail in all rules governing this regatta.

[SP] denotes a rule for which a standard penalty may be applied by the race committee or the technical committee without a hearing or a discretionary penalty applied by the International Jury with a hearing. This changes RRS 63.1 and A5.

[NP] denotes a rule that shall not be grounds for protests by a boat. This changes RRS 60.1(a).

- 2.2 [NP][DP] All competitor and support persons shall promptly comply with reasonable request or instructions from the race officials, including the officials in charge of the boat parking, access to the slipways and the harbour traffic.

3 CHANGES TO SAILING INSTRUCTIONS AND NOTICE TO COMPETITORS

- 3.1 Notice to competitors will be posted on the Official Notice Board (ONB from now on), located at the Race Office.
- 3.2 Any change to the Sailing Instructions will be posted before 10.00 on the day it will take effect, except that any change to the Schedule of races will be posted by 20.00 on the day before it will take effect. This SI affects the possibility to sail one extra race per day as defined SI 5.2.

4 SIGNALS SIGNALS MADE ASHORE

- 4.1 Signals made ashore will be displayed on the signal mast near the ramp close to the bar between 09.00 and 20.00h.

- 4.2 [DP][NP] Code Flag “D” with one sound means: “Boats may go afloat. The first warning signal will be made not less than 45 minutes after D is hoisted.” No boat shall go afloat until this signal is displayed.

SIGNALS MADE AFLOAT

- 4.3 [DP][SP]Flag AP or N over Flag H or A displayed together with the Red Cross Flag displayed at any Race Committee vessel means: **all boats shall return immediately to the Yacht Club.** If a boat fails to comply with this SI, she will be given a scoring penalty of 10 points without a hearing according to RRS 64.1. [NP][DP]Red Cross Flag hoisted at the Race Committee vessel means: Support vessels must collaborate in safety labours.

5 PROGRAMME

- 5.1 The schedule of the event is as follows. (This changes NoR 5.1)

Day	Hour	Act
Thursday, March 7 th	10:00 - 18:00 14:00 18:00	Opening Race Office registration Practice Race Mandatory Coach & Team leaders Meeting
Friday, March 8 th	10:15 12:00 After races	Team Leaders meeting First warning Signal Q-Series Lunch
Saturday, March 9 th	09:15 11:00 After races 18:00	Team Leaders meeting First warning Signal Q-Series Lunch Tour
Sunday, March 10 th	09:15 11:00 After races	Team Leaders meeting First warning Signal F-Series Price giving ceremony
Monday, March 11 th		Departure of participants

On Sunday 10th no warning signal will be made after 15.30 h.

- 5.2 A maximum of three Races will be sailed per day. One extra race can be sailed if the Race Committee is behind the program. This changes NoR 5.2
- 5.3 To alert boats that a race or sequence of races will begin soon, the orange starting line flag will be displayed with one sound at least five minutes before a warning signal is made.

6 RACE FORMAT

- 6.1 The regatta will consist in a Qualifying Series (Q-Series) and a Final Series (F- Series).
Minimum 4 races are required to be completed by each fleet to constitute a Q-Series.
If, at the end of March 9th, 4 Races are not completed by all fleets or if some fleets have more race scores than others, the Q-Series will be extended, and no F-Series will be sailed.
If the Q-Series is extended, the whole day will be used to complete further Q-Series races even if 4 races have now been completed.
- 6.2 For the qualifying series boats will be assigned to fleets (Yellow, Blue, Red, Green) of, as nearly as possible, equal size and ability.
Initial assignments will be made by a seeding committee appointed by the race committee. The decision of the Seeding Committee under this SI will be final and will not be grounds for redress. This changes rule 62.1(a). These assignments will be posted by 21.00, the day before the first qualifying race.
- 6.3 A) In the qualifying series boats will be reassigned to fleets after each day of racing, except if on the first day only one race is completed. Those assignments will be posted by 09:00 hours of each racing day The series scores for reassignment will be calculated for those races, numbered in order of completion, completed by all fleets. Reassignments will be made as follows:
- | Rank in series | Fleet assignment |
|----------------|------------------|
| First | Yellow |
| Second | Blue |
| Third | Red |
| Fourth | Green |
| Fifth | Green |
| Sixth | Red |

And so on...

B) Assignments will be based on the results available at 19.00 that day regardless of protests or requests for redress not yet decided.

C) If at the end of the day some fleets have more score results than others, the fleets with less scores will sail the missing races next day (on the same group as they were on previous day) and thereafter they will sail in the new fleets.

6.4 A) Boats will be assigned to final-series fleets Gold, Silver, Bronze or Emerald on the basis of their scores in the qualifying series. The final-series fleets will have, as nearly as possible, equal size but so that the Silver fleet is not larger than the Gold fleet, nor the Bronze fleet larger than the Silver fleet.

B) Any recalculation of qualifying-series scores after boats have been assigned to final-series fleets will not affect the assignments except that a redress decision may promote a boat to a higher fleet.

7 CLASS FLEET FLAGS AND ADDITIONAL IDENTIFICATION[NP][DP]

7.1 For each start, the *Class Flag* (RRS 26) will be a coloured flag of the fleet to be started, with colours according to the following table:

Fleet Yellow	Yellow Flag
Fleet Blue	Blue Flag
Fleet Red	Red Flag
Fleet Green	Green Flag
Fleet Gold	Yellow Flag
Fleet Silver	Blue Flag
Fleet Bronze	Red Flag
Fleet Emerald	Green Flag

7.2 [NP][DP] While racing, each boat must display the colour ribbon of his Fleet at the top of the sprit.

8 COURSE AREA - COMMITTEE BOATS [DP]

8.1 Committee Vessels will be identified displaying a White Flag with "RC" writing in black.

8.2 Jury Vessels will be identified displaying a White Flag with "J" or "IJ". Measurement Vessels will be identified displaying a White Flag with "M" letter.

8.3 Annex II shows the position of the Course Area. This area can be modified, and it will be announced by:

a) Posting it at the Official Notice Board, before flag "D" is hoisted.

b) With Flag "L" hoisted at the Race Committee Boat.

8.4 [DP]Boats not racing shall stay out of the areas where the boats are racing.

9 THE COURSE

9.1 Annex I shows the courses, the order in which marks are to be passed and the side on which each mark is to be left.

9.2 [SP][NP]Boats sailing from Mark 2 to mark 3-3' shall not pass between the finishing marks. The breach to this SI shall be penalised with 5 points.

9.3 The gate marks may be replaced by a single mark, in this case the remaining mark will be left on port.

10 MARKS

10.1 Marks will be red inflatable conical.


10.2 Starting Marks will be race committee vessels at both ends of the starting line.

10.3 Finishing Marks will be the race committee vessels with blue flag and a mark with a Yacht Club Pennant or two race committee vessels with blue flag.

11 THE START

11.1 Starting area is defined as the rectangle that covers a surface of 100 mts to windward and leeward of the starting line and 50 meters each end of the starting line.

11.2 Races will be started as follows: this modifies RRV 26.

Signal	Visual Signal	Time before start
Warning	Fleet Flag 1 sound	5
Preparatory	Code Flag "U", or "black"  1 sound	4
	Flag "U" or "black" removed 1 sound	1
Start	Fleet Flag removed 1 sound	0

- 11.3 The Starting Line will be between staffs displaying ORANGE flags on two race committee vessels. A boat shall not start later than 4 minutes after her starting signal. If so, she will be scored as DNS. This changes RRS A4 and A5.
- 11.4 [NP][SP]Once the starting sequence for the first fleet has started, all boats from the other fleets shall wait inside the waiting area. The waiting area windward boundary will be designated by Red inflatable cylindrical buoys. Boats of the next fleet to start, may approach the starting line only after the starting signal of the previous fleet has been made and no general recall has been signalled. The breach to this SI shall be penalised with 3 points.
- 11.5 [NP][SP]Boats that have finished shall return directly to the waiting area or ashore, keeping well clear of all boats racing and of all boats whose warning signal has been made. The breach to this SI shall be penalised with 3 points.
- 11.6 Race committee vessel can use engine to maintain his position if necessary.

13 CHANGE OF COURSE

- 12.1 To change the next leg of the course, the race committee will move the finishing line or move the leeward mark.

13 THE FINISH

The finishing line will be between staffs displaying blue flags.

14 TIME LIMIT

- 14.1 Times limit and target times are as follows:

Time limit	Target time
60 min	40 min

Failure to meet the target time will not be ground for redress.

- 14.2 Boats failing to finish within 15 minutes after the first boat sails the course and finishes will be scored DNF without hearing. This changes RRS 35, A4 and A5.

15 PROTESTS, PENALTIES AND REQUEST FOR REDRESS

- 15.1 In addition to what is stated on RRS 61.1.a, immediately after finish, a boat that has the intention to protest, shall inform the race committee vessel at the finish line, about the boat/s intended to protest, and she must be sure that the race committee acknowledges.
- 15.2 Protest forms are available at the race office. Protests and requests for redress or reopening shall be delivered there within the appropriate time limit.
- 15.3 For each fleet, the protest time limit is 60 minutes after the last boat has finished the last race of the day or the race committee signals no more racing today, whichever is later.
- 15.4 Notices will be posted within 30 minutes of the protest time limit to inform competitors of hearings in which they are parties or named as witnesses. Hearings will be held in the protest room, located at the Race Office beginning at the time posted. Hearings may be scheduled to begin up to 30 minutes before the end of protest time.
- 15.5 Notices of protests by the race committee, technical committee or protest committee will be posted to inform boats under RRS 61.1(b).
- 15.6 A list of boats that have been penalized under Appendix P for breaking RRS 42 will be posted.
- 15.7 A list of boats breaches and the associated standard penalties will be posted on the Official Notice Board.

However, the race committee may protest a boat when they consider the standard penalty to be inappropriate. A boat that has been penalized with a standard penalty can neither be protested for the same incident by another boat nor can another boat request redress for this race committee action. This changes RRS 63.1 and Appendix A5.

- 15.8 On the last day of the qualifying series or on the last scheduled day of racing a request for redress based on a jury decision shall be delivered no later than 30 minutes after the decision was posted. This changes RRS 62.2.
- 15.9 On the last day of a series, or on the last scheduled day of racing, a request for reopening of a hearing or a request for redress based on a jury decision shall be delivered no later than 30 minutes after the decision was posted. This changes RRS 62.2 and 66.
- 15.10 If RRS Appendix N1.4(b) applies, the time limit for requesting a hearing under that rule is 30 minutes after the party was informed of the panel's decision.
- 15.11 The RFEV has approved that the decisions of the International Jury will be final as provided in RRS 70.5

16 SCORING

- 16.1 (a) If at the end of the qualifying series some boats have more race scores than others, scores for the most recent races will be excluded so that all boats have the same number of race scores.
(b) For the qualifying series, rule A4.2 is changed so that the scores are based on the number of boats assigned to the largest fleet.
- 16.2 a) When fewer than 4 races have been completed, a boat's series score will be the total of her race score.
b) When 4 or more races have been completed, a boat's series score will be the total of her race score excluding her worst score.
- 16.3 Except for race scores excluded under instruction 16.2(b), a boat's series score for the regatta will be the total of her race scores from the qualifying races completed by all fleets and her final races.
- 16.4 Different final-series fleets need not have completed the same number of final races. The boats in the Gold fleet will be ranked highest, in the regatta except for a boat disqualified from a final race under rules 5, 6 or 69.
- 16.5 To request correction of an alleged error in posted race or series results, a boat may complete a scoring enquiry form available at the race office.
- 16.6 One race is required to be completed for all the fleets to constitute a series.

17 SECURITY RULES [DP][NP][SP]

- 17.1 [SP] All participants will always wear a personal flotation device (PFD) according to class rule 4.2 (a), properly secured at all times while afloat except briefly while changing or adjusting clothing or personal equipment. This rule applies also to all support persons on a vessel.
- 17.2 All support persons shall have a VHF radio on board. This can be checked by the Organizing Committee on channel 71.
- 17.3 If a boat comes back ashore in a place different to the Real Club Náutico de Valencia or cannot come to the Club by his own means, he will immediately call:

<u>Real Club Náutico de Valencia</u>	<u>Security Supervisor</u>
<u>963 679 011-canal 09-16 VHF</u>	<u>670 420 049-canal 71 VHF</u>
- 17.4 All competitors will carefully observe these instructions. Otherwise they could be asked to pay all rescue expenses.
- 17.5 A boat that retires from a race shall, if reasonably possible, notify the Race committee before leaving the course area and shall report to the Race office upon arrive ashore.
- 17.6 Competitors not leaving the harbour for the day's racing shall inform the race Office prior to the first start.
- 17.7 When going out to race and before the first warning signal of the day, each competitor shall sign out. This may be done by the COACH or TEAM LEADER on behalf of the competitor, but it remains the responsibility of the competitor.
- 17.8 Every day on returning ashore and no later than the protest time limit each competitor shall sign in to confirm that they have returned ashore.
This may be done by the COACH or TEAM LEADER on behalf of the competitor, but it remains the responsibility of the competitor.
- 17.9 Failure to sign out shall result in a 5 points penalty for the first race. Failure to sign in shall result in a 5 points penalty for the last race completed.
If only one race is completed, failure to sign in and out will result in only 5 points penalty. A boat shall not be scored worse than a disqualified boat.

17. 10 Harbor rules [DP]

17.10.1 When going afloat and coming back ashore after racing, Harbor officers will control the Access to the slipways. Competitors shall comply with the instructions given by these officers.

18 REPLACEMENT OF CREW OR EQUIPMENT

18.1 Replacement of crew is not permitted.

18.2 [DP] Replacement of equipment will not be allowed unless prior permission of the Technical Committee.

19 MEASUREMENT CONTROL [DP][NP]

The technical Committee can take measurement controls during the event.

20 SUPPORT VESSELS [DP][NP]

All supports vessel shall comply with the exclusion area defined in annex III to this SI at all times from the Warning signal of the first fleet until all boats in the last fleet have finished and there isn't any boat racing.

21 VHF RADIO CHANNEL

RC will use channel 71.

22 ENVIRONMENTAL POLICY [NP][DP]

All competitors (sailors or his representative) are responsible to know and respect the Environmental Policy of the R.C.N. VALENCIA as mentioned below.

22.1 All competitors will cooperate to the correct treatment of the Residues Management made by the R.C.N. VALENCIA, basically to separate different residues in the corresponding bins.

22.2 All participants will make a responsible use of the resources (basically the water) while being in the RCN. VALENCIA.

22.3 All competitors will comply with the prohibition of throwing any type of trash or residue to the sea during the event.

22.4 All competitors take the commitment to make sure that the other persons, crews and support teams will comply with the mentioned policy.

22.5 On the other hand, the Club's staff is ready to help any participant to solve questions or doubts of this Environmental Policy

23 MOORINGS AND BOAT PARK [DP][NP]

The boats and support boats shall be parked and moored only at the designed places.

The distribution of the boat parking and the ramps will be organized by the Yacht Club Staff. Their instructions must be obeyed.

24 RESPONSIBILITY

24.1 Rule 4 of the Racing Rules of Sailing states: "The responsibility for a boat's decision to participate in a race or to continue racing is hers alone."

24.2 Sailing is by its nature an unpredictable sport and therefore inherently involves an element of risk. By taking part in the event, each competitor agrees and acknowledges that:

- (a) They are aware of the inherent element of risk involved in the sport and accept responsibility for the exposure of themselves, their crew and their boat to such inherent risk whilst taking part in the event;
- (b) They are responsible for the safety of themselves, their crew, their boat and their other property whether afloat or ashore;
- (c) They accept responsibility for any injury, damage or loss to the extent caused by their own actions or omissions;
- (d) Their boat is in good order, equipped to sail in the event and they are fit to participate;
- (e) The provision of a race management team, patrol boats and other officials and volunteers by the event organiser does not relieve them of their own responsibilities;
- (f) The provision of patrol boat cover is limited to such assistance, particularly in extreme weather conditions, as can be practically provided in the circumstances;
- (g) It is their responsibility to familiarize themselves with any risks specific to this venue or this event drawn to their attention in any rules and information produced for the venue or event and to attend any safety briefing held for the event;
- (i) Their boat is adequately insured, with cover of at least 350.000€ against third party claims.

25 LOCAL MARITIM REGULATIONS

The "Real Decreto 62/2008" states the maritime, navigation and human live safety conditions that applies on the nautical competitions. Participants are warned, before the races starts, that the boats can only

participate if they are legally authorised to sail in the waters where the event will take place and if their skippers have the legal permission to handle the boat.
The sailors must show, before the start of the races, the Insurance with the covered risks and the limit of the responsibility according to the Notice of Race, being covered to be used at nautical competitions.

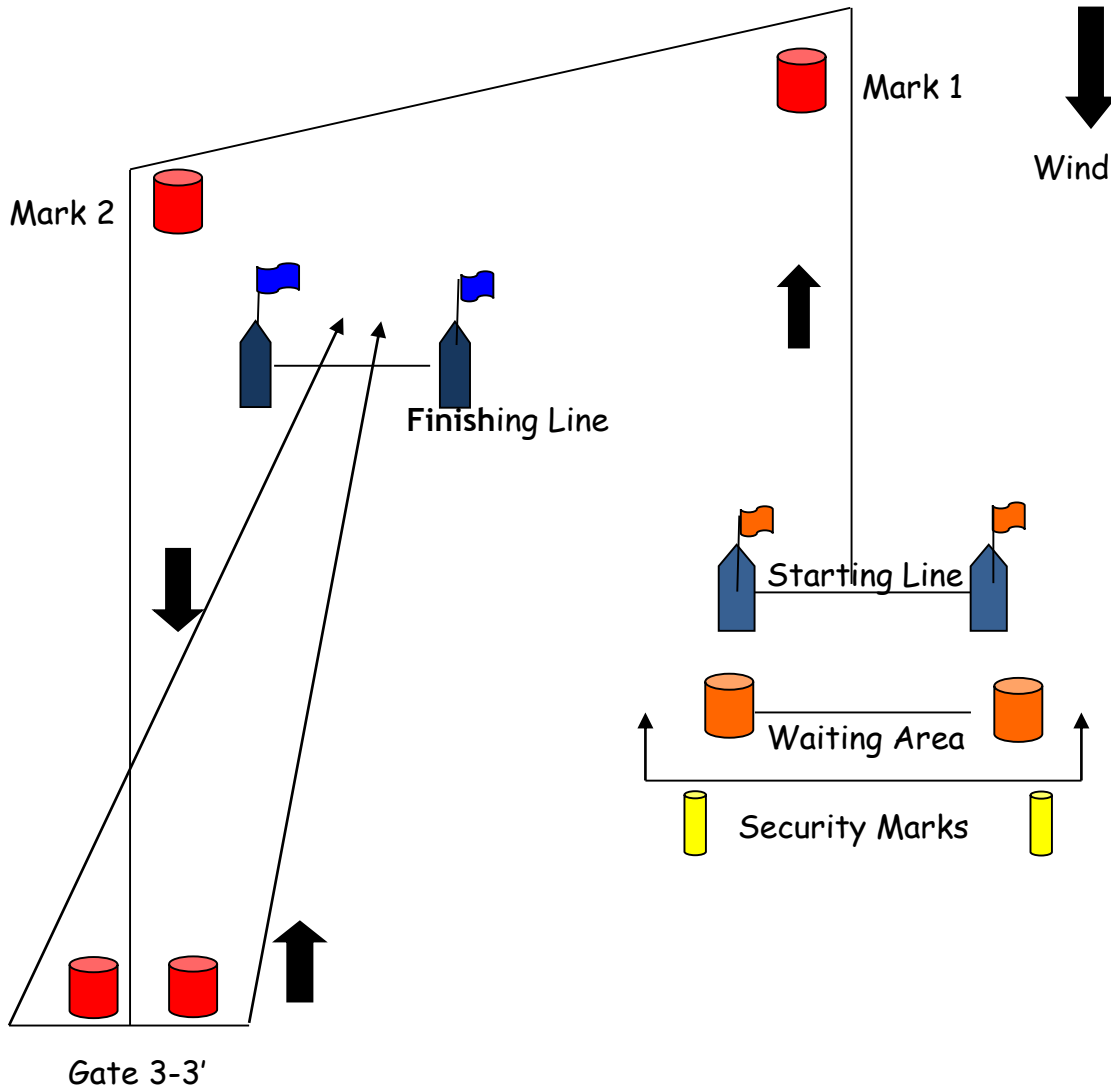
Valencia, March 2019

ANNEX I

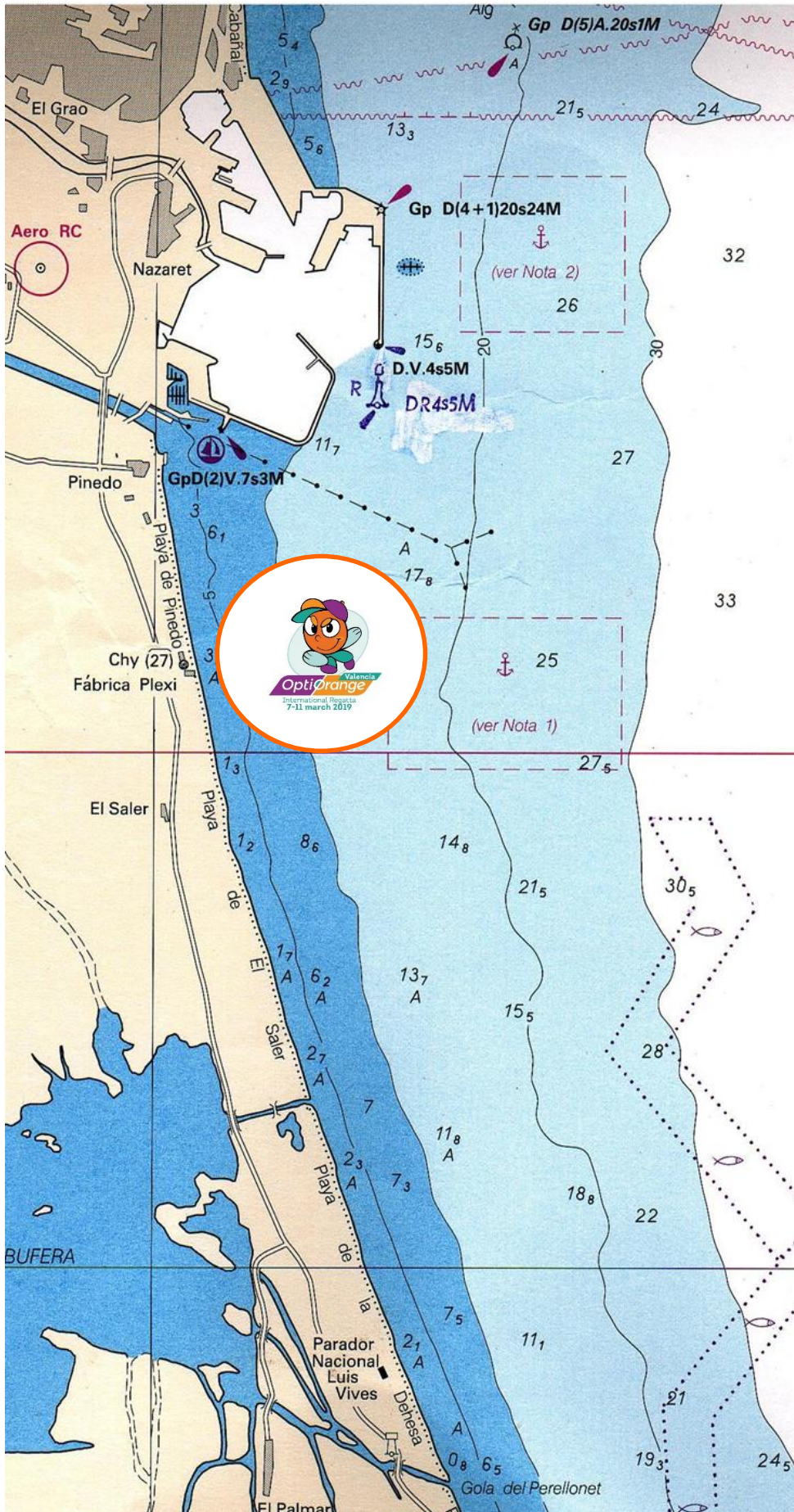
COURSE AND MARKS

<i>Course Marks Red Conical</i>	<i>Start – Mark 1 - Mark 2 – Gate 3-3' –Finish</i>
---	--

All marks to be left on port



ANNEX II



Annex III

Exclusión Area-Waiting Area

